

QUANTUM FOUNDATION

CAPABILITY BUILDING



OVERVIEW

Quantum Foundation funds initiatives that improve the health and lives of the people of Palm Beach County, Florida. Their vision is for the people of Palm Beach County to experience a better life through quality health. Palm Beach Venture Philanthropy (PBVP), a division of Quantum Foundation, was launched in 2023 to drive catalytic change and improve trajectory of life and health outcomes by addressing social determinants of health, including the factors of power, policy, and practice through transformational philanthropy and investments in underinvested neighbourhoods.

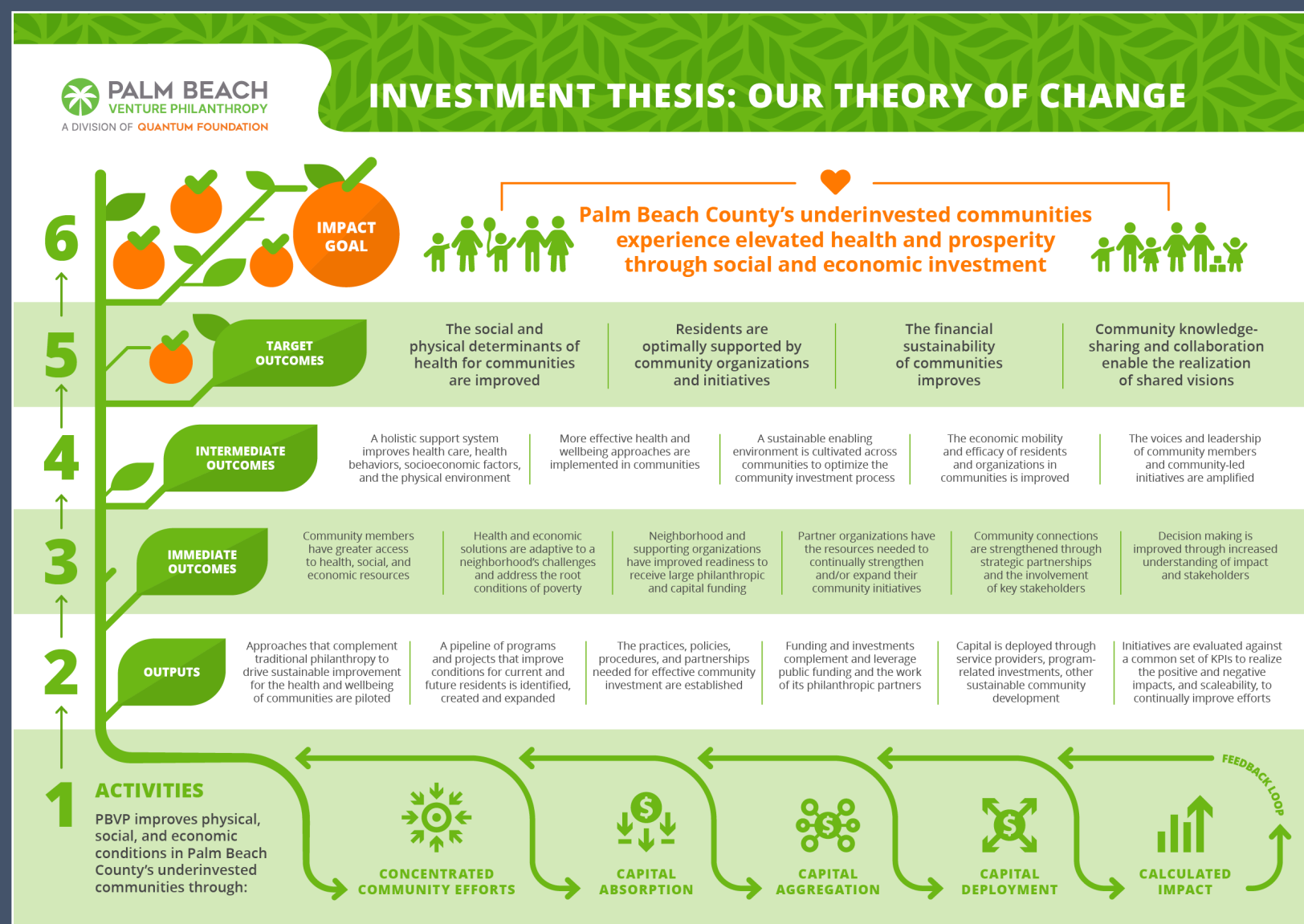
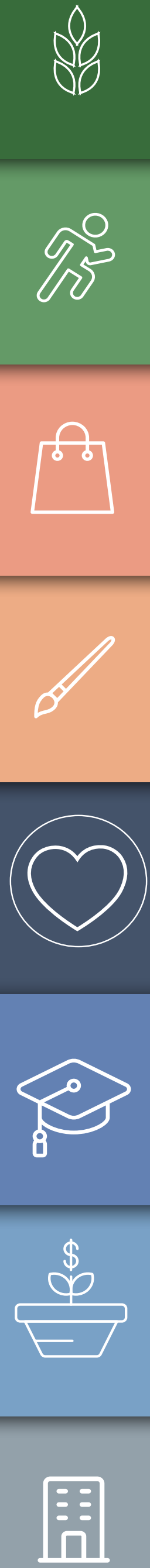
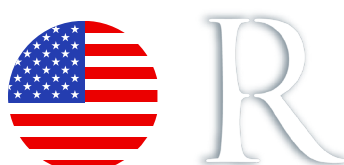
PBVP complements traditional philanthropy by cultivating new partnerships, focusing on high-reward solutions, creating additional paths for impact, and much more. In collaboration with its partners, PBVP leverages untapped resources to fund innovative, community-driven solutions that address the most pressing neighbourhood needs, building upon the strengths of traditional philanthropy. Their overall vision is for the distressed communities of Palm Beach County to be elevated through social and economic investment.

THE CHALLENGE

With ambitions to convene strategic community partnerships, deploy equitable investments and resources, and ultimately, amplify holistic positive impact in Palm Beach County, the PBVP team saw the need to improve their Impact Measurement and Management capabilities to improve decision making, resource mobilisation efforts, and the strength of their stakeholder relationships, as well as increase their support offering to partners. With many years of practice in traditional philanthropy, they were eager to learn the best approach for launching and growing PBVP.

“Our capabilities as a PBVP team have come a long way over our time working with Relativ. We have a greater understanding of how to measure impact across a wide range of partners implementing interventions in a defined community. Our Theory of Change and Impact Measurement Framework are important tools to guide the strategic approach of our new division. We have already used them as a lens to review applicants to our place-based RFP.”

Camden Baggs, Project Manager for Special Initiatives





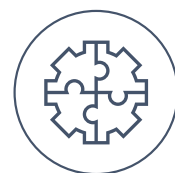
WHAT WE DELIVERED

- > Capability Mapping
- > Theory of Change
- > Stakeholder Map
- > Impact Measurement Framework
- > Simulation Model
- > Investment Prospectus
- > Facilitation of stakeholder engagement



RESULTS

The Capability Mapping process was used to assess PBVP's strengths and areas for attention within their Impact Measurement and Management processes, procedures, and tools. The results outlined the various capabilities needed to achieve their impact goals and adjust resources as required. The Theory of Change and Impact Measurement Framework were developed as tools for PBVP to track and measure their impact with partners. The Simulation Model was established to test, understand, and communicate the impact of their goals. The Investment Prospectus will assist in the communication of their impact intentions, outline key opportunities, and invite potential partners to join their journey. Both the Simulation Model and the Investment Prospectus are being implemented as strategic communication tools to engage stakeholders and form partnerships.



IMPACT

PBVP is using their increased Impact Measurement and Management capabilities to pave the way for what intentional and effective community support looks like in Palm Beach County by focusing on one neighbourhood at a time, beginning with Coleman Park. Their improved impact evidencing tools are supporting this capability and their relationships with new investment partners, investees, and other key stakeholders regarding their commitment and progress towards achieving positive change.

"We are now looking at our intended impact from a multi-dimensional systems level to affect whole neighbourhoods. Relativ is helping us transform the way we work. We will be able to report impacts and tell stories beyond a single level of outcomes at one organisation. PBVP's approach to neighbourhood change mobilises people and financial investments in a measurable fashion; and helps our staff, board and stakeholders understand it all."

Eric Kelly, President

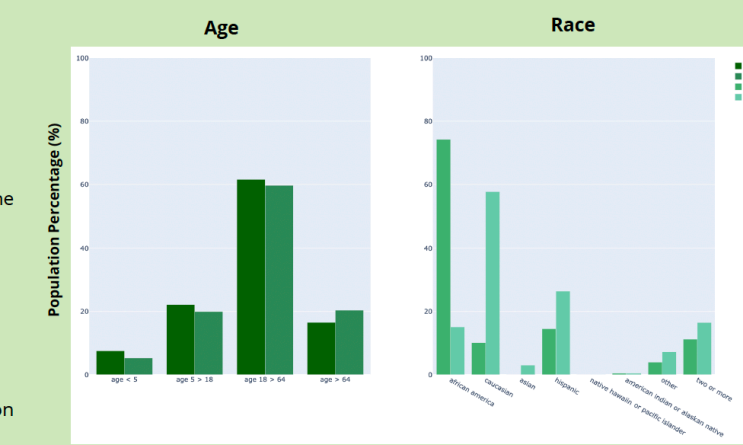


Palm Beach County Community Assessment

Population

Age

- The age brackets in both Coleman Park and Florida show the same patterns:
- The lowest population percentage is seen in those younger than 5 years old.
- Those between the ages of 18 and 64 occupy the highest population percentage.



Race

- In Coleman Park, approximately 3/4 of the population are African Americans (74.25%), whereas only 15% of the entire Florida population identifies as African American.
- Conversely, 10% of the Coleman Park population is Caucasian, while over half of the Florida population identifies as Caucasian (57.68%).

View Figure 1 in Appendix for enlarged graph



A DIVISION OF QUANTUM FOUNDATION

Data Collection & Impact Measurement Recommendations Report

December 14, 2023

